



Cherry Trees School

Working, Learning, Achieving Together



Welcome

At Cherry Trees School, We cater for our children through a flexible pathways approach, enabling us to focus our curriculum approaches on the individual, whilst making sure we plan for every child's progression. All our pupils have an EHCP and we cater for a wide range of needs.

We focus on developing the children in a holistic way, looking at academic learning, social development and building self esteem – encouraging our pupils to develop the skills to self-regulate and contribute positively to all they do with a 'can do' attitude.

Pupil attainment and development is an essential part of education and at Cherry Trees School we take a personalised approach and use this information to record and track the pupil's progress.

Our vision is to provide an inclusive education which inspires pupils to succeed by working, learning and achieving together.

We are proud of the close relationships we have with our pupils and their parents/carers.

Alison Garrett,
Headteacher



Our Ethos and Values

The school strives relentlessly to raise aspirations and attainment by providing high quality teaching and learning in a safe a secure environment in which the pupils' welfare is paramount and where everyone is valued equally.

“This caring and supportive ethos runs through this small school with a huge heart. This contributes to behaviour that is positive in lessons and at other times.”

Ofsted Report February 2024

We endeavour to develop the characters of all of our learners through developing the following values:

- Dream Big
- Build Relationships
- Be Kind

We ensure that our vision is woven into all that we do by:

- Building and maintaining excellent relationships between pupils, staff and parents/carers are understood as fundamental to our success
- We all share consistent high expectations for all pupils and staff.
- We create an engaging and creative curriculum that provides all pupils with stretch and challenge whilst being relevant to the individual needs of all pupils.
- Maintain a positive, happy and motivating learning environment and culture.
- Pupils' learning, health, and well-being are addressed comprehensively through a holistic approach to pupil development.
- We foster pupils' confidence and self-esteem while instilling respect for others, understanding of responsibilities, and positive behaviour.
- We nurture strong links with the local community we serve.

Pupil Support and a therapeutic approach

Staff from Health and Education work together to ensure the wellbeing of all of our pupils. A nurse is based on site for 1 day a week to advise and support our children and families. Physiotherapy, occupational therapy and Speech and Language programmes are devised by NHS staff and delivered by our school staff.

We have a dedicated team to offer family support, with a focus of safeguarding, mental health and supporting our families to bridge the gap between professionals, school and home life – making sure the children can succeed in all areas.

We have education staff who are trained in a range of therapeutic approaches to enable wellbeing to be a focus of what we do because we know that children learn best when they have a high level of wellbeing.

These therapies include: Music Therapy, Animal Assisted Learning and Play Therapy. Along with our onsite swimming facilities, these are part of children's timetables each week and help to develop a sense of calm and self-reflection for all.



EYFS

Cherry Trees School Early Years Foundation Stage is part of our Blue Class provision. It provides early intervention placements for nursery aged learners and reception school places for children in the South Staffordshire area for children aged 2-5 years.

The setting provides a specialised full-time provision from a specialist lead teacher and teaching assistants and music therapist. The EYFS have access to the whole school facilities. This includes a light room, large open class space, outside areas, outdoor learning provision, onsite swimming pool, library, nurture room, soft play and therapy room.

To gain a place referral must go through the Early Years Forum in Staffordshire.



Teaching and Learning Key Stage 1 and Key Stage 2

Our school curriculum at Cherry Trees School is underpinned by our ethos of educating children in the knowledge, skills and understanding, that will enable them to lead fulfilling lives and be as independent as possible.

We have a pathways model, that provides routes for Sensory Learners, Semi Formal Learners and Formal Learners. Our approach is dedicated to meeting the needs of the individual child. We incorporate flexibility in order that children can access a variety of experiences throughout their time with us.

Our curriculum is devised so that pupils follow a pathway that will have the most effective impact on their individual development. Child centred learning encompasses opportunities for pupils to learn and develop their confidence and skills through a broad, balanced, adapted, and creative curriculum. Practical lessons and interactive learning are highly valued and educational visits are a common feature.

Through our curriculum we strive to ensure every child has a sense of self-worth and have some understanding of responsibility, self-discipline, and an aspiration to employment. We have high expectations and set aspirational targets that inspire pupils.





Teaching and Learning: The Sensory Curriculum

At Cherry Trees school, we have a group of children that require an inclusive Curriculum, The Sensory Curriculum. This is for our children who have the most complex needs, arising from a combination of difficulties, including co-existing conditions such as Autism and ADHD, profound and multiple learning disabilities, physical disabilities, sensory impairments, mental health needs and challenging behaviour.

They also include children who have difficulties arising from premature birth, have survived infancy due to advanced medical interventions, and/or have rare chromosomal disorders. For those children at the very early stages of cognitive development, a Sensory Curriculum is appropriate for their individual needs. Our Sensory Curriculum consists of a programme of study which will be offered in a variety of situations.

The children are taught using a thematic approach, with a new theme each half term. There is a two-year rolling program that is followed and the children progress through the phases. This also incorporates their weekly sessions of physiotherapy, speech therapy and occupational therapy following individual programs. Children can move in and out of the Sensory Curriculum as they progress and develop.

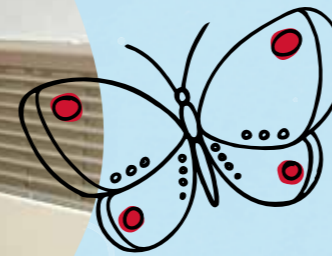


Teaching and Learning through school progression

It is important that children who attend have same age peers. This enables the children to develop appropriate friendships and share common age-appropriate likes, learning and communication.

We develop our classes in response to the children's social needs and learning approaches, this gives us the flexibility to get the approach right for each child. Children usually change class every two years and the work around transition takes place in a carefully planned and resourced manner. When the children leave us in Year 6 most of our children transition to Wightwick Hall School.





School Organisation and Uniform

Cherry Trees School opens at 9:10am and closes at 3:15pm.

School uniform is compulsory, and it can be purchased from the school office. Alternatively, you may purchase a plain sweatshirt in the correct colour from any high street chain store or supermarket.

Uniform:

- Dark green polo shirt*
- Black/grey trousers/skirt
- Dark green sweatshirt* or cardigan*
- Suitable school footwear

PE Uniform:

- A Green T shirt
- Black shorts and jogging bottoms
- Pumps and trainers
- 1 Piece costume/trunks

All uniform must be named, so that we are able to help find anything that is misplaced by the children.

We request that no jewellery is worn, including earrings.



Community Support

The school is an integral part of the local community in Wombourne and the wider area. Our pupils take part in a wide variety of projects and visits. We offer support to local mainstream schools and provide our therapeutic provision to local mainstream schools, who should request this through the Staffordshire SEND and inclusion Hub model.

We encourage and support everyone in our learning community to be the best they can be. It matters. We operate within strict ethical and equitable guidelines.

Our community fosters leadership, equity, diversity and respect. We encourage our learners to recognise their own abilities but also their challenges.

It is an adventure rich with opportunities for lifelong learning, personal development, achievement and enjoyment. We are a forward-looking organisation. We seek to ensure that each school's individual character and spirit is celebrated and protected. It is our partnerships with other schools and organisations that enhances the quality of the provision we offer.





Cherry Trees School | Giggetty Lane, Wombourne | Wolverhampton | West Midlands | WV5 0AX
Tel: 01902 894484 | Email: office1@cherrytrees.staffs.sch.uk | Headteacher: Alison Garrett
Staffordshire Local Authority SEND Assessment and Planning Service
District Office Contacts | South Staffs: 01902 506150



SEN Transport Team | Queries about existing or future arrangements?
Please contact the SEN Transport Team:
Telephone: 0300 111 8000 | Email: sentransportqueries@staffordshire.gov.uk




endeavour