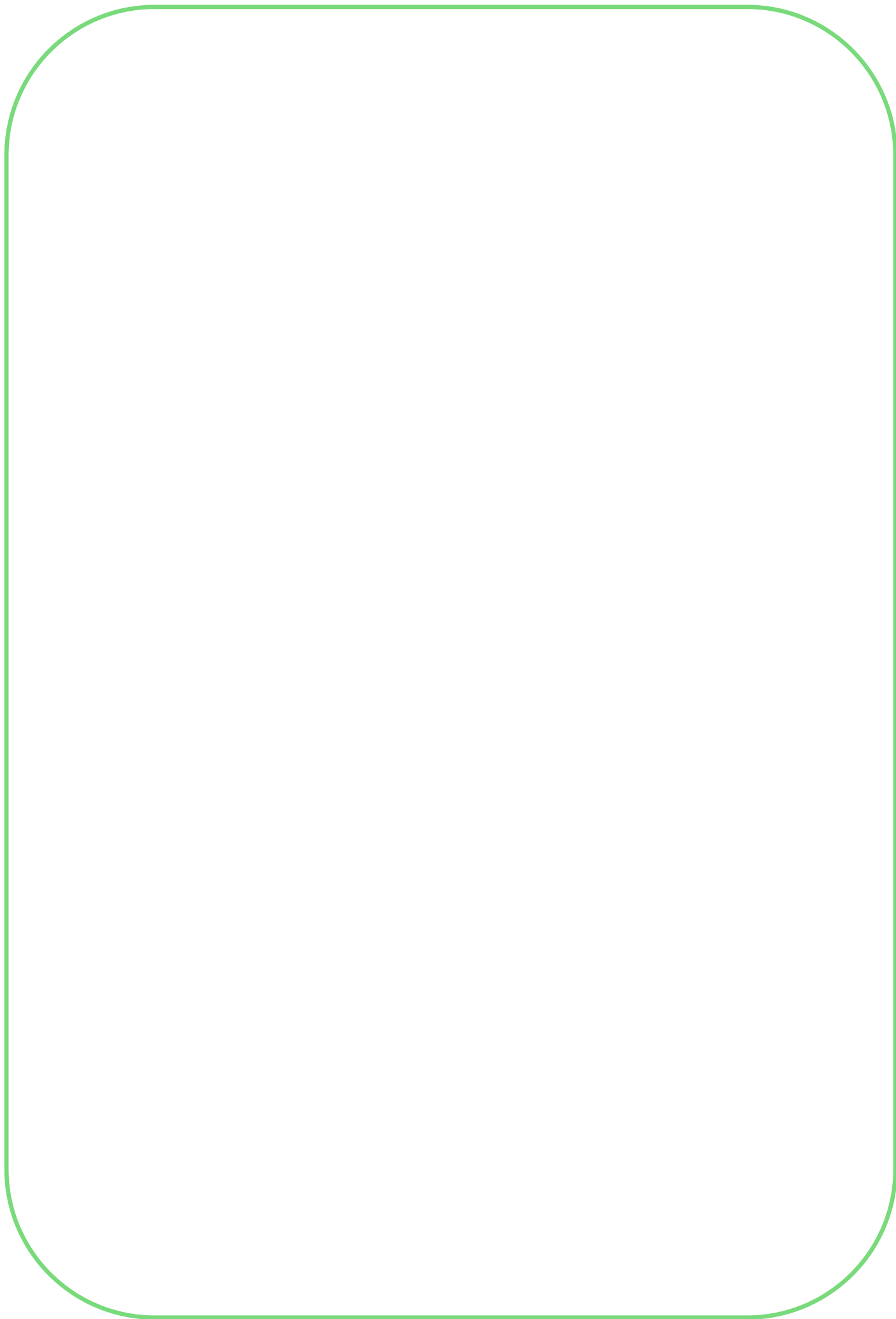




## **Green Class**

### Parent Information Booklet 2023-2024





Hello,

My name is Bethan Paton and I have recently completed my PGCE and am now an Early Career Teacher. I have been leading Green Class since April 2022.

I have been at Cherry Trees since September 2020 and I will be Green Class teacher for next year.



Dear Parents and Carers

Welcome to Green Class.

Whether your child is new to the school or returning to Green Class for another year, we will do everything we can to ensure that they settle happily and quickly into their new class group. We hope that you find the information included in this booklet useful in providing information and an insight into the experiences and opportunities that are offered in this class.

### **Key information**

- \* We try our best to go outside every day. Please send in appropriate clothing for the day e.g. a warm coat for colder days and sun hat for sunny days.
- \* Please send in a full spare set of clothes for your child in September, all clearly labelled with their name. We have lots of fun in Green Class, but accidents happen and sometimes fun things do get messy!

### **Green Class**



## Organisation of the School Day

### Mornings

9.00 - 9.25	<p><b>Arrival</b></p> <p>On arrival the children are welcomed and helped to hang their coats and bags onto their pegs. (Promoting independence)</p> <p><b>Good Morning</b></p>
9.20- 9.25	<p>The morning begins with a look at the visual timetable so everyone knows what activities they will be doing during the day ahead.</p>
9.35 - 10.30	<p><b>Teaching session</b></p> <p>Targeted small group and whole class teaching activities are used to develop the children's core Maths and English skills, including Phonics and reading skills learning.</p>
10.30- 11.00	<p><b>Snack and Play time</b></p> <p>The children sit together to enjoy a mid-morning snack and drink, developing their table manners and communication skills in requesting their chosen snack. Outdoor play is then available and everyone is helped to go outside and develop their gross motor skills and explore the outdoor environment.</p>
11,00- 12.00	<p><b>Teaching session</b></p> <p>In Green class, our teaching sessions include a combination of planned, adult-led activities and opportunities for child-initiated and independent learning through themed continuous provision and play.</p>

## Organisation of the School Day

### Afternoons

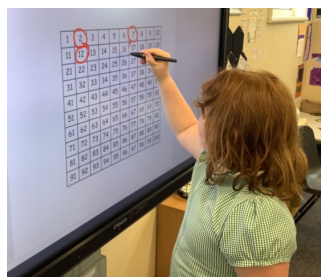
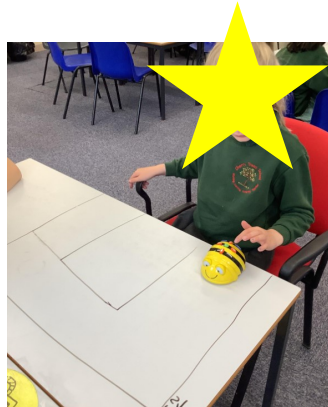
12.00 - 1.00	<p><b>Lunch time</b></p> <p>Lunch is served in the classrooms in Green class and the children are supported to eat their packed lunch or school dinner. They are then able to enjoy play and outdoor activities on the playground.</p>
1.00 - 2.00	<p><b>Teaching session</b></p> <p>As with the morning session, this will include a range of planned, adult-led activities and opportunities for child-initiated and independent learning through specific subject all joined through a theme.</p>
2.00- 3.00	<p><b>Teaching session</b></p> <p>Again, this will include a range of planned, adult-led activities and opportunities for child-initiated and independent learning through themed continuous provision and play—focused on specific subject teaching and learning.</p>
3.00 - 3.15	<p><b>Home time</b></p> <p>The children come together to share a class story and learning and are then encouraged to collect their belongings ready to go home.</p>

## Curriculum

Children in Green Class learn by playing and exploring, being active and through creative and critical thinking, which takes place in both the indoor and outdoor environments.

In Green class the children access an adapted National Curriculum. The flexibility of our curriculum allows staff to meet the children's unique needs and interests. Additionally, not all the learning that takes place in our classrooms is planned for and incidental learning is valued.

Our teaching and learning covers subjects right across the curriculum and is often delivered creatively and using cross-curricular links to our half-termly topics.



## Green Class Topic Overview

Autumn 1	Autumn 2	Spring 1	Spring 2	Summer 1	Summer 2
Year A					
Frozen Planet	Journeys	Space-out of this world.	Amazing Animals	Terrific Time Travellers (Romans)	Colour, Shimmer and Shine
Year B					
Happy Healthy Me	Victorian Wonderland	Let it Grow!	Chocoholics	The Great Outdoors	The Big Top

### How We Learn...

**Child-initiated activities** - pupils are expected to choose from a range of structured activities, with adult support to model engagement, communication and skills and to develop language and play as appropriate.

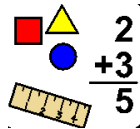
**Teacher-directed activities** - differentiated, planned activities with learning objectives, delivered with staff working with children on a 1:1 basis or in small groups.

**Individual Education Plan targets** - there are three personalised targets set each term and shared with parents. These are linked to your child's EHCP and therefore relate to the needs of each child. Staff will then focus on these where appropriate and they are reviewed at the end of each term.

## English



Using a range of texts linked to our half-termly topics, the children in Green class have the opportunity to develop an interest in stories, poems and non-fiction texts. Interactive activities give them the chance to explore characters and settings, retelling familiar stories and even creating ideas for their own. They develop their reading and writing skills.



## Mathematics

In Green class, we aim to provide the children with the foundations that they will need for later numeracy skills, by developing counting skills and their understanding of numbers and quantity. They may calculate simple addition and subtraction problems through play and will use practical activities and equipment to explore concepts and language relating to shapes, spaces and measures.

## Science



Our half-termly Science topics are delivered through engaging experiences and practical investigations. We encourage the children to use their senses, make observations and develop their understanding of key scientific vocabulary. In Green class, some children may use photos, symbols and simple tables to record their findings.

## **SMSC: PSHE, RSE and RE**



Providing core foundations for their time at Cherry Tree, we support the children in Green class to help them develop a positive sense of themselves, form positive social relationships and learn how to manage their feelings and behaviours in a variety of different situations. We also explore the practices and traditions of different religions and cultures to develop their understanding and respect for different beliefs and values.

## **Humanities: History, Geography and Computing**

Using technology, artefacts and experiential visits outside of school, the children in Green class develop an awareness of the world around them. Together, we learn about different people, places and periods of time.



## **Creative: Art, D&T and Music**

We give the children the opportunity to use tools and equipment to express themselves through a wide range of media and materials. Creative lessons in Green class are fun and open to the children's own ideas and imaginations.

## **Physical: PE**



In addition to our weekly PE lessons, we aim to give the children time everyday to develop physical skills both inside and outside the classroom, using small and large equipment. For children with particular needs. Green class take part in our daily mile and have access to our wonderful play equipment on our field.

## **Communication and Language Development**



Developing communication and language skills is a really important part of our work with the children in Green class and is embedded into all areas of the curriculum. We aim to give all the children opportunities to experience a rich language environment to develop their confidence and skills in communication and listening. This may include working towards targets set by the Speech Therapists.

### **Assessment**

In Green class, we use SOLAR as an assessment tool to record information about your child's learning. This gives us an insight into how they are progressing against a series of statements in each area of the curriculum. This record will follow them through school, so that we have a clear record of their learning journey all the way through school.

Please note, we take photographs as part of our observations and it may be possible that your child is included in a photograph of an observation of another child. However, these photos will not be released outside of school unless you have given permission for this.



## Independence Curriculum



We maximise opportunities throughout the day for the children to develop their independent skills. The children are encouraged to practise different life skills each term to ensure they can be as independent as their abilities allow. In Green class children will do this through mainly their daily routines in school: this will include skills such as finding their own belongings, dressing and feeding. Life skills provide the foundation to ensuring our children can access a full and independent adult life, ensuring they can stay safe and happy. You can find a copy of our Independence Curriculum on the school website. This has a list of the key skills and achievement steps we work towards in Green class, so that you can support with these at home too.

## Community visits

Each class is provided with a weekly session to use one of our school minibuses to access the community. These visits provide opportunities to enhance and extend the learning that takes place in the classroom. They also give us the chance to help the children experience and learn what is expected in places such as supermarkets, cafes, shops and local parks. This is an ideal time to develop independent life skills in a real-world context.



## Rewards and Recognition



**ClassDojo**

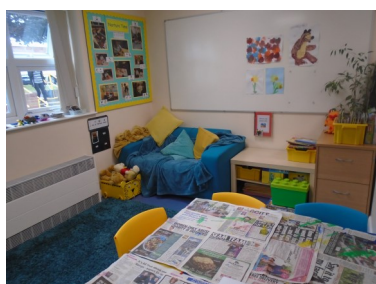
In Green Class we use Dojo points daily and prizes linked for individual points and class rewards for reaching an amount as a class. The children will be involved in setting the target in September.

We also use stickers :-) Stickers are given for an instant reward for work, kindness, and being helpful.

We also have weekly certificates. Super Seven Spellings for 7 out of 7 OR for an improvement and Marvellous Maths for top marks or improvements.

In Green class we also work towards reward afternoon, in the past we have had a teddy bear picnic, ice cream on the field, movie afternoons. These treats we all enjoy together as a class.

## Shared Spaces



At Cherry Trees our classes enjoy access to a number of shared spaces which provide opportunities for both learning and therapeutic experiences.

These include: the school library, the swimming pool, the forest school, the therapy room, the Dark Room, the kitchen and nurture room and the soft play room.

## Nurture and Therapies



At Cherry Trees we believe in helping your child to develop emotionally, socially, independently and academically.

**Music therapy** - each class at school will have the opportunity to have group sessions with our Music Therapist, Carlence. He provides the children with opportunities to experience and engage in the opportunities that music provides, such as communication, socialisation, expression and happiness.

**Play Therapy** - Claire is a trained play therapists and we utilise this skill so that the children have the opportunity to visit The Therapy Room to take time away from the classroom to relax. These may be regular, timetabled sessions or ad-hoc visits to support pupils at times when we feel it may be beneficial to their wellbeing.

**Lego therapy** - Staff at school are trained in Lego therapy and use this as a vehicle to provide opportunity to support the children's mental health and well being. This can take place in class or in our special therapeutic space.

**Nurture** - We have a dedicated space in school to offer nurture support to the children. This is a timetabled programme delivered by our classroom staff. This helps the children to develop their self esteem and engagement. Activities in these sessions also include cooking and are very well received by the children who take part. All parents will be informed if this is taking place.



**Animal Therapy** - All pupil have the opportunity to access weekly animal therapy sessions. We utilise a local stables for horse riding and have our own resident guinea pigs, Anna and Elsa, that are very popular.

## Home-School Communication

Home-school communication is very important to us and we value opportunities to work together to support the children in Green class. Every parent will have the chance to communicate with their child's class teacher on a daily basis via Class Dojo. We also use Class Dojo to send home photos and information about learning and events that have taken place at school, so you can share these at home too. This happens during school hours.



At Cherry Trees School we hold two formal Parents Evenings each year in the Autumn and Spring Terms. We also offer an informal Coffee Morning in the Summer Term. These meetings provide an opportunity for you to discuss your child's IEP targets and look at the work in their books. In addition to these, you will be invited to an annual EHCP Review meeting and will receive a written report detailing your child's progress and attitude to school at the end of the year.

### **Our aim is for school and home to work as a partnership.**

If there are any problems that need to be discussed, please discuss these initially with your child's Class Teacher. If the issue is still not resolved, a member of the Senior Leadership Team will be happy to help. Should you wish to arrange a meeting with the class teacher, please do not hesitate to contact the office or send a message on Class Dojo and your child's class teacher will contact you at their earliest opportunity.

## **Topic Overviews**

At the beginning of each half term, you will receive an overview of the topics being covered across the curriculum in your child's class. This will provide you with an insight into what your child is learning and enable you to share this at home.

## **School Newsletter**



We send home a copy of The Cherry Trees Newsletter once a month which will share news and photos about the classes and whole-school events. This will also provide reminders for important dates and up and coming events.

## **School Website**

Our school website has lots of information which you might find useful. Please do visit the website regularly, as we frequently add and update information.

[www.cherrytreesschool.co.uk](http://www.cherrytreesschool.co.uk)

## **School Office**

Please contact the school office if you have any questions or queries.

Telephone: [01902 894484](tel:01902894484)

Email: [office1@cherrytrees.staffs.sch.uk](mailto:office1@cherrytrees.staffs.sch.uk)

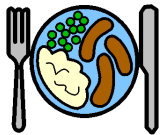
## Food and Drink

### Snack time

Children are encouraged to bring a healthy snack everyday.

Allergen advice: please make sure that you make us aware of any allergies that your child has so that we can accommodate these at snack time.

### Dinner time



School dinners are available to all children and individual dietary needs can be catered for by the school kitchen. Alternatively, children can bring their own packed lunch. Please label lunch boxes clearly with your child's name. In Green class, the children eat with their class group in the classroom and are supervised and supported by staff.

## Personal Care

Staff are available throughout the school day to support the children with personal care. If your child wears nappies, we ask that you send in a supply of nappies and wipes for us to use at school. We can store one pack of nappies per child in class and will let you know when your child is running low via Class Dojo.

## Health



If your child is ill and has an infection you are asked to keep them at home and inform school.

Children who have had infectious diseases will be allowed to return to school once the infection period has expired.

Parents are asked not to bring their child to school if they have had sickness or diarrhoea **until 48hrs after the last episode**

If a child becomes ill at school, we will speak to the school nurse for advice and then contact you if it is necessary to collect your child.

## Administration of Medicines

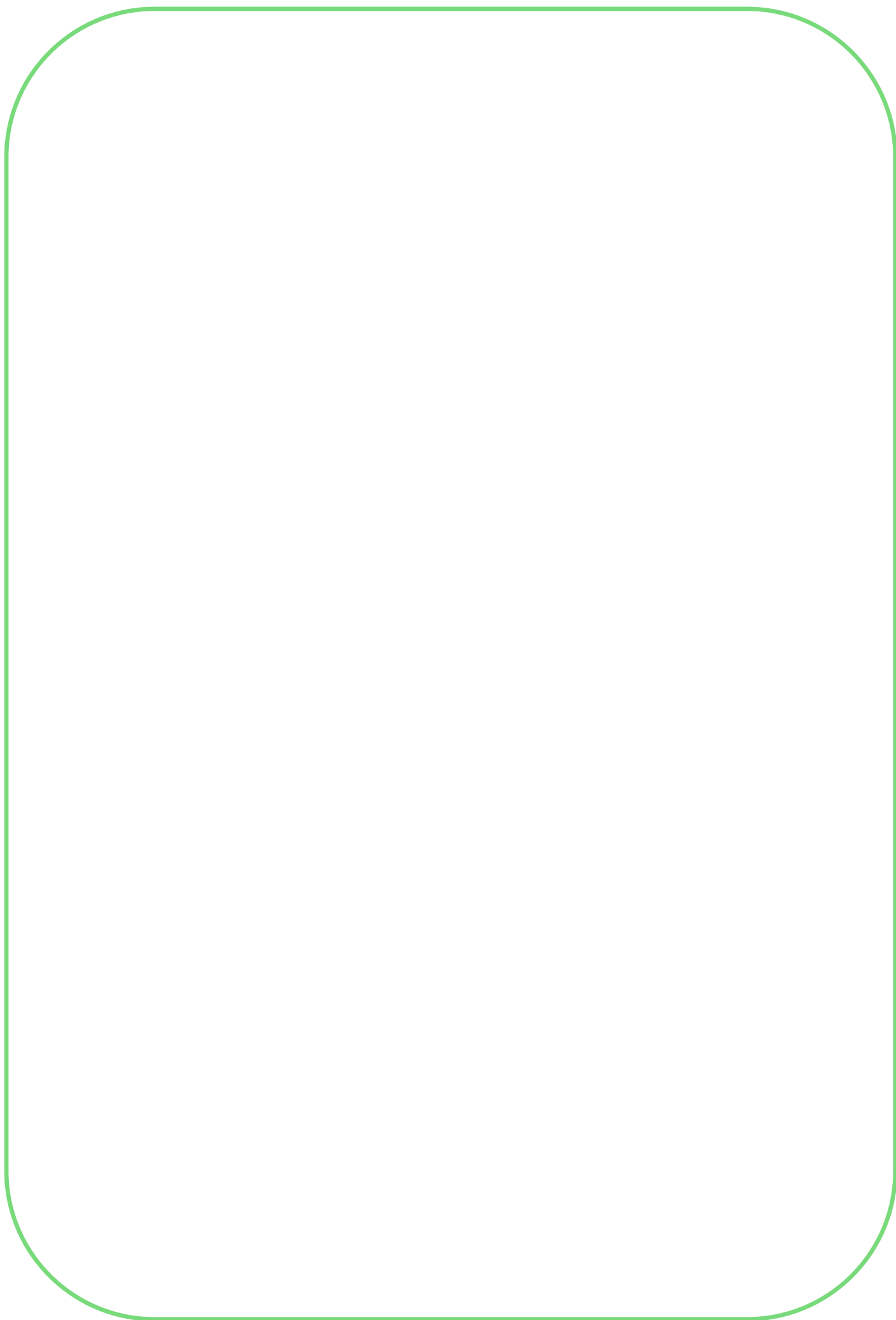


A form for general medicines is included in the school welcome pack for plasters, nappy creams etc for you to sign if you wish.

A permission slip must be completed in order for the school nurse to administer medicines including asthma inhalers.

All medicines must have a pharmacy prescription label on if they are to be administered during the school day.

All children with a known medical condition will have a Care Plan produced by the school nurse.



For further information contact:

Cherry Trees School  
Giggetty Lane  
Wombourne  
Near Wolverhampton  
West Midlands  
WV5 0AX

**Working, Learning, Achieving Together**

e-mail: [office1@cherrytrees.staffs.sch.uk](mailto:office1@cherrytrees.staffs.sch.uk)

Created by: Bethan Paton