



Hello All,

I am writing to share our school plans around transition in readiness for the next academic year. We are pleased that this year, we can invite new parents in to meet us and to learn about the school in a face to face experience. For children who are already members of the school, they will explore transition activities on the following days:

The days that the children are exploring transition activities are:

- **Wednesday 21st June 2023 9.30am-11.30am**
- **Monday 26th June 2023 9.30am – 11.30am**

Please note that Year 6 pupils will have a range of fun activities to do on these mornings whilst this is happening as they have a separate transition plan in place.

During these days the children will take part in activities with different groups of children and some familiar and new to them staff – this will be done in a structured way and the children will see their normal classroom staff at key points in the day – to allow for wellbeing check ins.

Once we are happy with the planned class for your child, we will communicate with you about who their class teacher and team will be in September 2023.

Our school Pathways:

We will assign the children to their pathway, but this is not set in stone and the children can move in and out of the pathway, as their needs change. We will discuss any changes with you along the journey. Please visit our curriculum page on our website to gain more detailed information about both of these approaches.

We are drawing on the research of Penny Lacey and making pathways for the children in a suitable way to meet their needs with the correct curriculum approach. These pathways are:

Pre formal/Sensory – for children who learn through exploration and need very individualised pedagogy (with a close link between engagement, wellbeing and academic success). These curriculums are written for the individual – focusing on their EHCP outcomes – this ensures progress is planned for. This will involve a lot of specialist input from bought in services including weekly speech and language therapists, Private Sensory OT services, work alongside our in-school therapists and a concrete community visits-based timetable. There will be three classes in this pathway – this allows for planned progression for these

learners and ensures that expectations around independence are met in an age-appropriate way. (See diagram below).

Semi-formal/Formal – for children who respond well to a more formally structured learning approach, with increasing amounts of time working in groups or as a whole class. All curriculum will be written and structured for the children in these classes and will be based on the national curriculum expectations. These children will of course have access to additional services and will have targets set that they work on individually towards their EHCP. These children will experience community visits to support their in-class teaching and to bring cultural experiences to life.

Thematic approach:

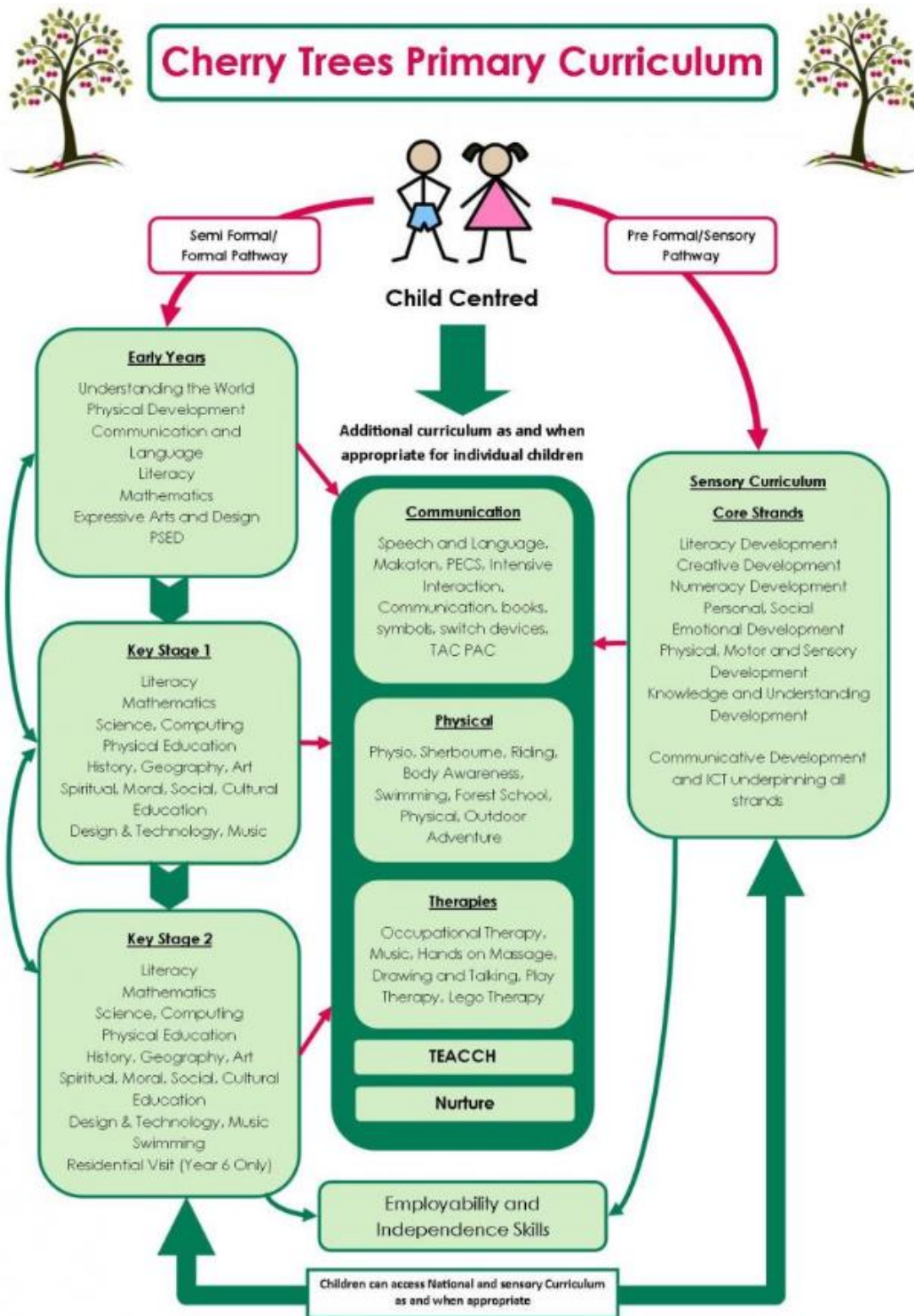
Cherry Trees Curriculum Thematic Overview (Year B)

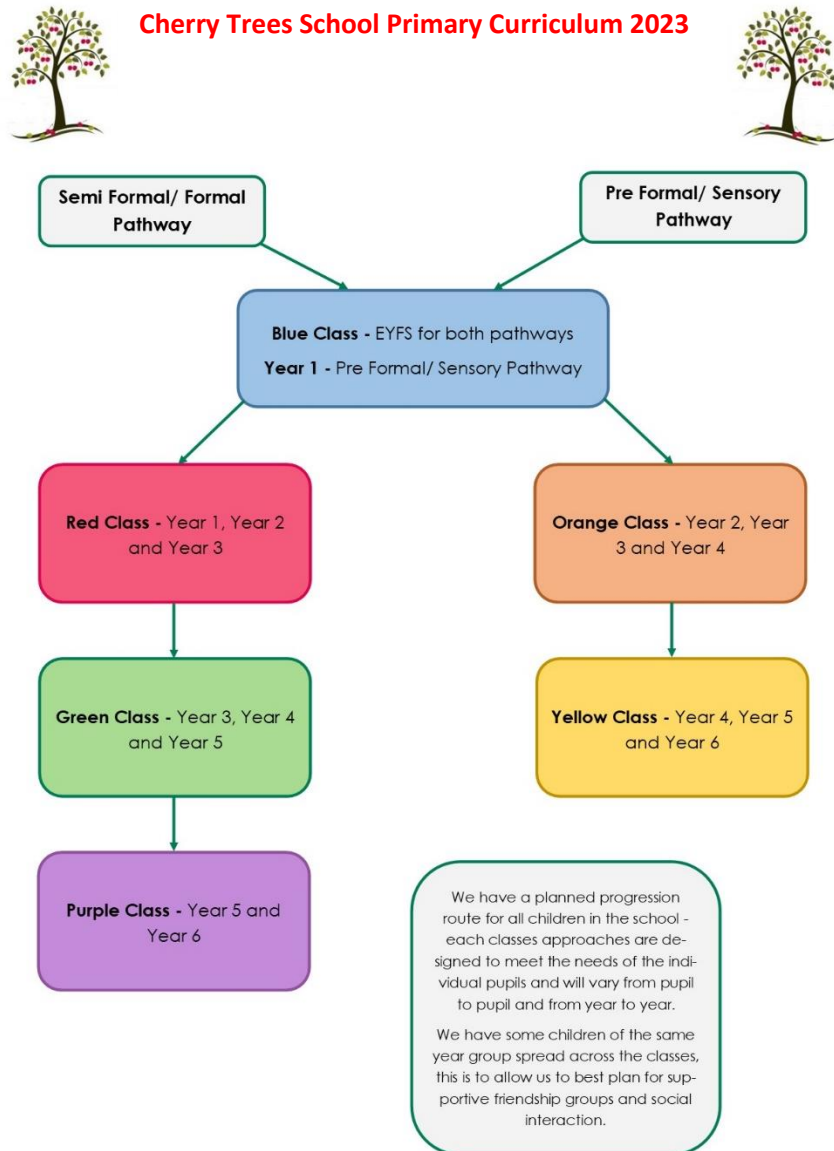
Classes	Autumn 1	Autumn 2	Spring 1	Spring 2	Summer 1	Summer 2
Blue	All About Me	Shape and Colour	Pets	Growing	Transport	Holidays
Red	Changes in Living Memory	Beyond Living Memory	Carnival Animals	Weather Experts	Local Area	Ocean and Seas
Orange	Growing Up	Planes, Trains and Automobiles	We're Going to the Zoo	Do you believe in magic?	Teddy Bears Picnic	Fun in the Sun
Green	Happy Healthy Me	Victorian Wonderland	Let it Grow!	Chocoholics	The Great Outdoors	The Big Top
Yellow	Autumn Witches and Wizards	Winter Festivals of Light	The Circus is Coming	How does your garden grow?	A Pirate Life for Me!	Food Glorious Food
Purple	Egyptians	World War 1 and 2	Famous for more than 5 minutes	Geographical Skills	Crime and Punishment	Sports Tournaments

2021 – 2022	2023 – 2024	2025 - 2026
-------------	-------------	-------------

All of the children will begin to access our two-year rolling programme of topics – subjects will of course be taught, and skills will tie into the topic themes above. Each half term parents will receive an overview of learning for that half term for their child, so hopefully you will feel that you are in the loop with all that is going on. This information will also be put on to the website for you to look at.

Below is an outline of what the curriculum pathways entail and how they overlap and dove tail to provide a child centred approach to learning.





Class pathways:

This is the breakdown of the class pathways – so that you can see the progressive route through school for all children, whatever their need and their starting point.

Please do contact school if you require any further information, we will endeavour to share more over the next few weeks and will continue to update the transition pages of the website.

Alison Higgs – Headteacher – Cherry Trees School