

Cherry Trees School News



Diary Dates

**Monday 11th
October -
Harvest Festival**

**Wednesday
13th October -
Parents
Evening**

**Friday 22nd
October -
Spanish Day**

**Monday 25th
October -
Friday 29th
October - Half
Term**

**Monday 1st
November -
INSET Day**

**Friday 5th
November -
Festival of
Lights**

Friday 1st October 2021: Issue 1

Headteacher's message: Laura Slinn

Welcome back to another school year. It's fantastic to be back and the children have settled in well to school life. It's been great to open up more widely again and welcome you in for events. It's also been great to carry out a full curriculum, including assemblies - in the hall.

You will see in this newsletter that this week Staffordshire have asked schools to consider reintroducing restrictive measures, but we are still in talks with them about when this will be an appropriate time to do so, we will keep you posted with any changes that need to take place.

Hopefully you have received your letter for parents evening and are able to return your slip - if you haven't please do contact school and ask for another letter.

Please enjoy our first monthly newsletter this year, you will see how busy we have already been.

Take care Laura.

Cherry Trees Learning



Blue Class News

We have all settled really well into the Autumn Term. Blue Class have welcomed new children in class, and we are all ready to begin our learning journey this school year. We have many exciting activities planned, which we shall be sharing with you in our monthly newsletters.

We have worked hard on our communication and social skills enjoying a variety of circle time activities by learning new songs and listening to stories. We have enjoyed visits from our Music Therapist, joined in with Nurture activities and begun some Lego and Play dough Therapy. Everyone has also enjoyed our weekly cooking activities. We have continued to engage in activities in the outdoor area in the lovely Autumn Sunshine. We have enjoyed lots of active Maths songs and Shape Space and Measure activities. Our new topic 'All About Me' has been lots of fun.

We are hoping to begin our Forest School sessions over the next few weeks, learning to explore the natural environment. A big thank you to everyone who has contributed to class funds so far, as this will benefit the children in our extra activities.



Cherry Trees Learning



Red Class News

Welcome to Red Class,

This half-term, the children have amazed us with how well they have come back into school after the Summer holidays and have settled into the routine of Red Class. The children have really enjoyed getting to explore the different areas of the school again; including soft play, swimming, and the park.

We have been looking at our topic 'Changes within Living Memory' and the children have already been enjoying look at and comparing new and old clothes, toys and machines.

As part of our topic, we are also looking at LS Lowry through our art sessions and will be creating our very own matchstick people pictures.



Cherry Trees Learning



Orange Class News

We are so proud of how well Orange Class have settled in. They have all adapted well to the new class.

In maths we have been focussing on 5 Little Ducks and experiencing lots of sensory activities and counting the ducks. We have really enjoyed singing the song!

Our topic this term is Growing up. We have been looking at baby animals and their parents.

In Expressive Art and Design we have made our scarecrow for the festival.

In our assembly we learnt about the Jewish Festival of Yom Kippur and decorated our Star of David.

We have started Attention Autism and have all been very excited and engaged to see what's in the bucket!



Cherry Trees Learning



Green Class News

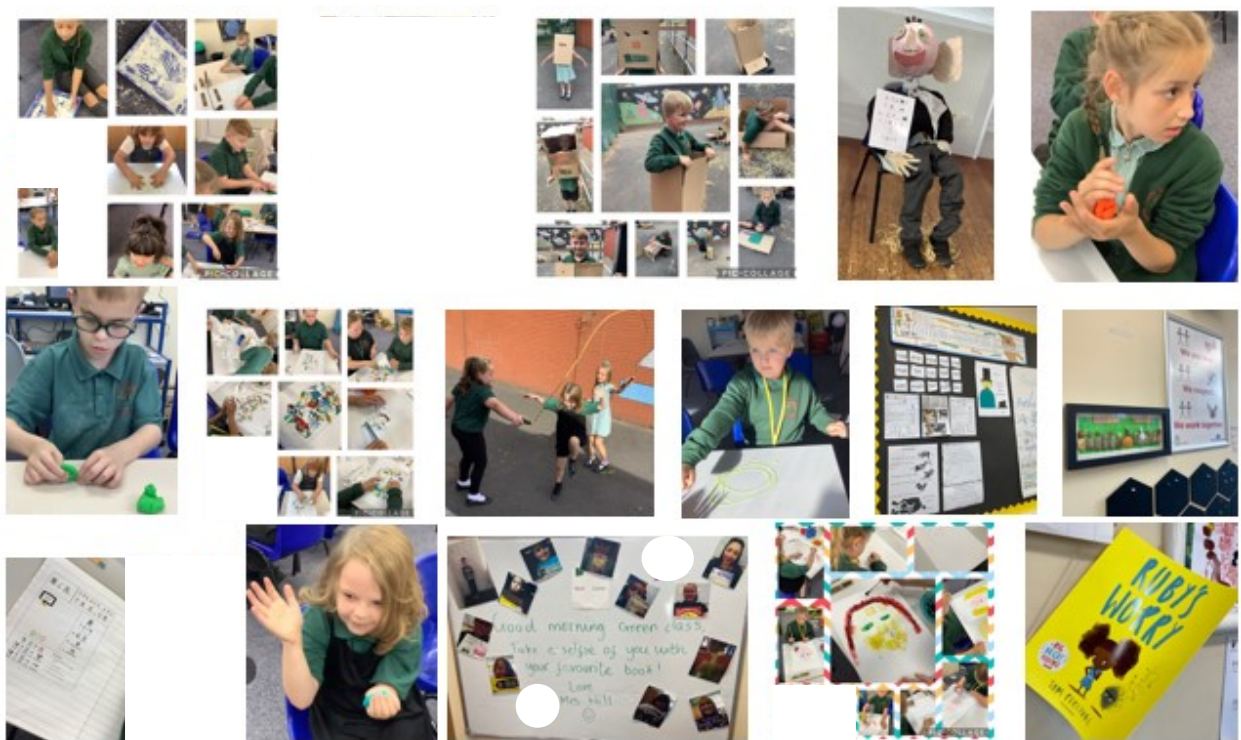
Welcome to Green Class,

It has been so lovely to have all the children back after the summer holidays and its lovely to welcome new children to green class.

We have already managed to fit so much in in a short space of time that I am looking forward to the year ahead.

We have had some sensory fun, created many things from boxes AND came joint first with our BFG scarecrow. In our English we have been looking at poems and wrote our own. We have also enjoyed our weekly Write Dance and Dough Disco.

We have looked at a story called Ruby's Worries and shared worries that we might



Cherry Trees Learning



Yellow Class News

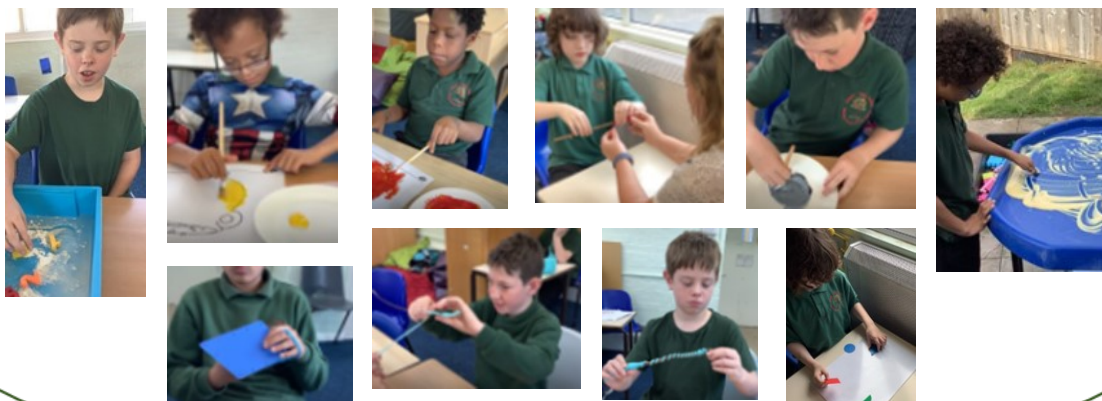


I am Miss Smart and I joined Cherry Trees at the beginning of September. I am yellow class teacher and on a Friday morning Ms Higgs covers my time out of class. This half term has been a busy one but I have LOVED it! I am without a doubt super proud of the children in Yellow Class. The children have settled in well to school life, they have adapted well to new adults in the classroom, they have developed a routine within the classroom and they have all been motivated and willing to have a go at activities.

Our English skills are split into three parts; reading, writing and communication. During our writing sessions we have been developing our gross and fine motor skills by taking part in lots of early mark making activities. Our reading sessions have been taking place in the library. We have been learning to read with adult support, share a book with an adult and with a peer. Our communication skills have been developing throughout the whole day with adults modelling language to the children for example "I want drink" using PECS or "can you help?" when needing help with an activity or a coat.

In Maths we split our learning into three parts; number, shape space and measure and applying. We have been learning to recognise numbers 1-5, we have been sorting objects by colour and size, we have also been looking at a selection of 2D shapes. During these sessions we have used numicon to support number, sensory trays with shapes hidden in them and we made shape prints using paint and 3D shapes.

In our topic, we have been learning about witches and wizards. We have made wands using wool and sticks, pizzas following children's interests, painted cauldrons, and printed ghosts on dark paper.

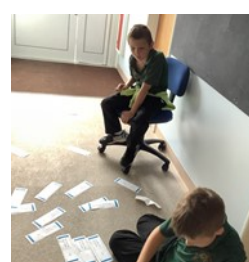


Cherry Trees Learning



Purple Class News

A busy month in Purple Class. Pupils have been welcoming new classmates, settling into routine after the holidays, developing friendships, enjoying new experiences and working hard. Here are a few highlights from September.



Cherry Trees Communicating



Scarecrow Competition

Thank you for all of your support with the Scarecrow competition last week. It really was fantastic to see so many of you visiting the school again. The children really enjoyed making their scarecrows, and well done to Green and Purple class who both received an equal amount of votes. They win £20 for their classes.

Well done to all who participated and won on the raffle – We raised £95!



New School Website

Our new school website is now live! Please do check out the website for news, information, remote learning and calendar dates. We hope you like the new gallery and get a chance to explore the site.

www.cherrytreesschool.co.uk

Staffordshire Holiday Activities and Food Programme

Please see the link below to access the parent survey for the Staffordshire Holiday Activities and Food (HAF) summer scheme:

[https://
consulation.staffordshire.gov.uk/
childrens-and-families/
hafparentssurvey](https://consulation.staffordshire.gov.uk/childrens-and-families/hafparentssurvey)

Clare Phillips—Therapeutic Lead

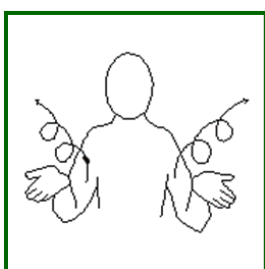


I would like to take this opportunity to introduce myself and let you know what I can offer. I have worked in the school for four years and have now started a new role as therapeutic lead. As well as liaising with other professionals and therapists, part of my role is to look after the wellbeing of both children, parents and carers. Please feel free to contact me via the phone or drop an email at c.phillips@cherrytrees.staffs.sch.uk if you need some help, support or just a coffee and a chat!

Cherry Trees Sharing



Sign of the Month



Play

Our sign of the month is Play – Hold out both hands, palm up and make three circles moving your arms up – whilst you say play. You can see how to do the sign here:

https://Makaton.org/TMC/News_Stories/SOTW/SOTW_To_Play.aspx

Whole Class Monthly Attendance

Group	% Attend
Blue Class	95.9
Red Class	98.8
Orange Class	91.4
Green Class	94.7
Yellow Class	91.9
Purple Class	83.8



Congratulations to:

Red Class

**You have the best
Attendance for the Month
Well done to all of you.**



Cherry Trees School Council



The school council have held their first meeting. We discussed ways we could help to bring together the school community. Some fantastic discussions and ideas were offered. Watch this space for further school council developments. We will meet monthly with a set agenda and minute each meeting.

Some of the ideas revolved around a talent show contest! The school council will work closely with class teams to develop this project. Helping others was also high on the agenda, and the school council will work alongside Purple class to develop a harvest festival collection for the local community.

Cherry Trees E-Safety



You Tube Safety

Our children LOVE YouTube whether they use it to watch their favorite shows, listen to music or watch the surprise toy videos. As a teacher I also use YouTube as a learning tool as there are some fantastic FREE resources available, HOWEVER, YouTube also contains a huge amount of inappropriate content which is easily accessible to our children completely by accident.

Not only does inappropriate content exist if more adult topics are searched but also some seemingly innocent clips can take children on streams of videos which adults, at a glance, may not notice are not appropriate. Unfortunately, people have created rather graphic and upsetting 'cartoons' using our children's favorite characters and it would be easy to believe that these clips are appropriate as it appears to be Peppa Pig or Minions! Often these 'cartoons' are fan created so they are not to the same quality as the copy write versions. Another way people have made these innocent cartoons into adult entertainment is by dubbing the voices.

Here is how to use Restricted Mode on YouTube.

- Create an account in Google that is used by the whole Family. When you make a shared Google account you can see exactly what videos your children are watching, uploading and even what they are sharing.
- Once you have signed into YouTube via the Family Google Account, the next thing to do is switch on restricted mode. If you scroll all the way down to the bottom of the YouTube page you will see an option to turn on Restricted Mode. This will help keep out some, but not all, of the inappropriate content you don't want your children to see. Remember that you must save this option and you have to set it up for every browser that you use. If you have multiple computers or devices then you will have to do this on each of them.
- Sit down with you children and go through the things that they like to watch. Most of things they like will be attached to a channel. If you are happy with the content of the channel then get them to subscribe to it, this will promote the page's content to their feed when they log in. It also lets them know when new videos are available; hopefully this will stop some of the searching which may lead them into content you don't want them to see.
- **If your children are under 13 years of age, then YouTube has created an App available on Google Play and Apple's App store especially for them called 'YouTube for Kids'. YouTube for kids was created especially for children under 13 years of age, using stronger filtering algorithms to keep children safe. Remember though nothing is 100% safe so maintain an interest in what they are doing, supervise all online use and keep having those important safety chats.**

Remember E-Safety is an important part of Safeguarding children! If you would like further advice, please do not hesitate to contact school for support and we will do our best to answer your questions!

Cherry Trees COVID Safe



Letter to Parents

Dear parent,

Covid-19 rates in Staffordshire are now some of the highest in the UK, and we must do everything we can to reduce these rates and stop the spread of the virus in our communities.

The biggest numbers of cases are in the 11 to 18 age group, with schools and colleges in Stafford, Staffordshire Moorlands and Lichfield particularly badly affected.

Because of this, we are asking all schools and parents to do what they can to minimise the spread of Covid-19.

As a parent, you can help by continuing to LFT test your child twice a week. If they are showing any symptoms of Covid-19 you must keep them off school and get a PCR test as soon as possible at a local testing site.

If another member of your household tests positive for Covid-19, we strongly recommend that all members of your household get PCR tests as a precaution. We would also advise you to stay at home until you get your result.

We have also put together some extra measures that schools are being encouraged to take to limit the spread. These include:

The reintroduction of class bubbles

No all-school events like assemblies for the time being

Enhanced cleaning, especially in high-risk areas

Staggering of start, end and lunch times

Possible reintroduction of face coverings in secondary schools

Request that all contacts of positive cases are asked to get a PCR test

Where pupils/staff have a sibling/parent/guardian/other member in their household who is a confirmed case there is a high risk of infection. PCR testing strongly advised for all household contacts. Pupils/staff household contacts advised to stay at home pending PCR test result – this will normally take 48-72 hours.

Promotion of the vaccine to eligible pupils and staff

Consideration of other pre-summer break Covid controls where the school sees fit to do so.

If infection rates escalate, some schools may need to close for short period and move lessons online (for some classes/year groups), to prevent the spread and reduce ongoing transmission.

You school will let you know which (if any) of these measures they will be implementing in the coming days. These measures are not compulsory, and schools continue to develop their own Outbreak Management Plans. However, if your school has chosen to introduce some or all of these measures, we ask that you please support them and do everything you can to stop the spread of Covid-19.

Yours sincerely,

Staffordshire County Council